



US 130/30 Equity

30 2010

E-

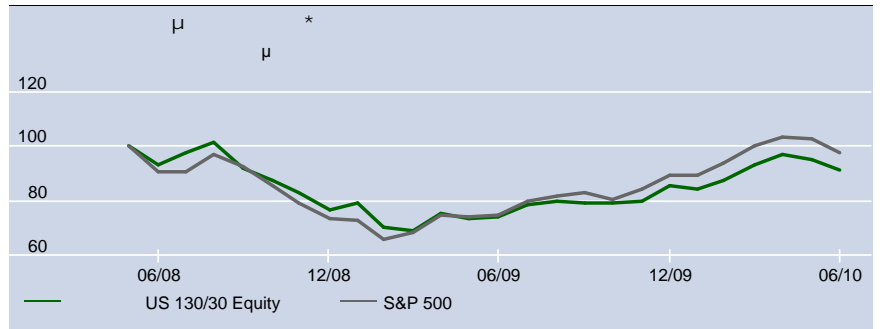


<p>(-) : Glen Murphy, 2010</p> <p>(-) Anthony Shufflebotham, 2010</p>	
<p>(-) : 2008</p> <p>(-) : 2008</p>	
<p>(-) : (SICAV)</p>	
<p>EUR</p>	
<p>EUR 5,87</p>	
<p>EUR 6,40 (14/05/10)</p>	
<p>EUR 4,63 (13/07/09)</p>	
<p>EUR 3,29</p>	
<p>EUR 500</p>	
<p>3,00%</p>	
<p>2,25%</p>	
<p>TER: 2,77%</p>	
<p>+ 4</p>	
<p>S&P 500</p>	
<p>Bloomberg: INVUSEE LX</p>	
<p>ISIN: LU0334856894</p>	
<p>S&P Fund Rating: A</p>	

Invesco Global Quantitative Equity. 13

20,9 2010.

2/3



	1	3	5	%
	22,80	-	-	-8,57
	30,55	-	-	-

	2009	2008	2007	2006	2005
	10,93	-	-	-	-
	22,31	-	-	-	-

	μ 12μ	**	%			
	30.06.05	30.06.06	30.06.07	30.06.08	30.06.09	30.06.10
	30.06.06	30.06.07	30.06.08	30.06.09	30.06.10	22,80
	-	-	-	-20,33		

© 2010 Morningstar * Mid to mid, μ μ μ 30 2010. **

Mid to mid, μ μ μ μ 30 2010.

