



US 130/30 Equity

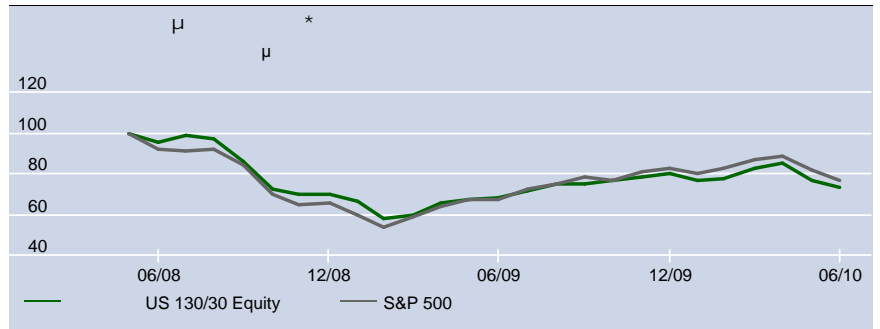
30 2010

A-



Glen Murphy, 2010	
Anthony Shufflebotham, 2010	
2008	
2008	
(SICAV)	
USD	
USD 7,29	
USD 8,55 (26/04/10)	
USD 6,51 (13/07/09)	
USD 4,04	
USD 1.500	
5,25%	
1,50%	
TER: 3,70%	
+ 4	
S&P 500	
Bloomberg:	INVUSEQ LX
ISIN:	LU0334856209
S&P Fund Rating:	A

Invesco Global Quantitative Equity. 13



	1	3	5	
	7,21	-	-	-27,10
	14,00	-	-	-

	2009	2008	2007	2006	2005
	14,61	-	-	-	-
	26,24	-	-	-	-

	30.06.05	30.06.06	30.06.07	30.06.08	30.06.09	30.06.10
	30.06.06	30.06.07	30.06.08	30.06.09	30.06.10	7,21
	-	-	-	-28,42	-	-

	1	3	5
	4	-	-
	371/427	-/356	-/293

© 2010 Morningstar * Mid to mid, 30 2010. **

